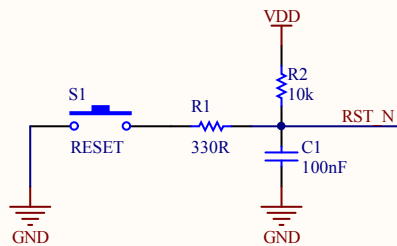
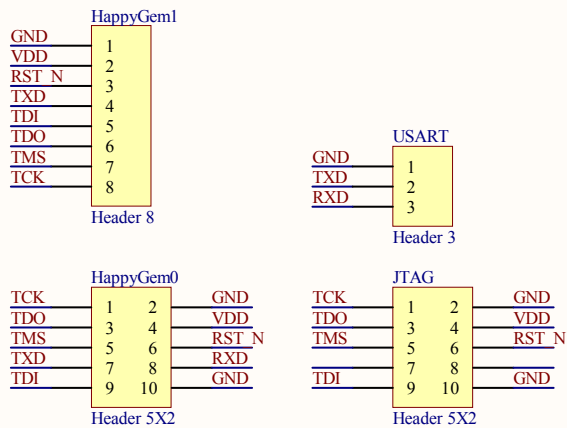


# HappyGem JTAG Adapter

## Notes

This adapter is used to interface the HappyGem (either the v0.1 prototype or the v1.0 final version) to a standard JTAG debugger, and a USART serial port.

The adapter includes a reset switch. The PCB includes traces for the full reset circuit suggested by Atmel's application notes. This circuit is perhaps overkill for most, so instead of mounting any of the resistors/capacitors, it's possible to just use a wire instead of R1.



Title		
Size	Number	Revision
A		
Date:	9/26/2012	Sheet of
File:	\\.\GemAdapter1.0.schdoc	Drawn By:

